



<http://digitalnomad.ie/an-introduction-to-timemapper/>



Mapping Time and Space using OKFN's TimeMapper

Narrating and Curating Time and Space



This work by Shawn Day is licensed under a
Creative Commons Attribution-
NonCommercial-ShareAlike 4.0 International
License

Objective(s)

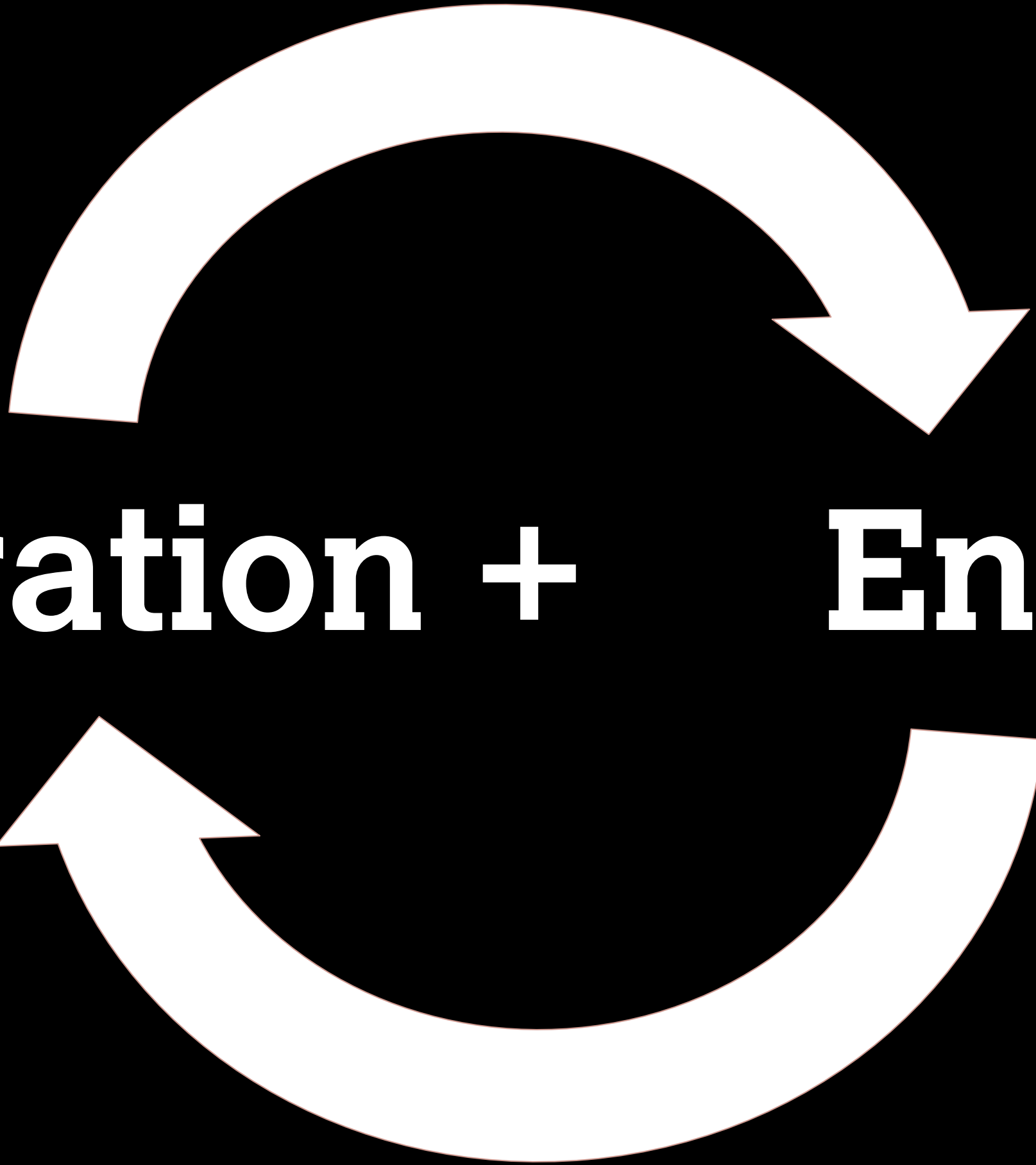
- Present an innovative and accessible tool for presentation of scholarly research using temporal and spatial vectors;
- Engage in free and informal discussion about how it might be employed in your own research;
- Inspire and Imagine.

Agenda

- Open Knowledge Foundation
- Temporal Data Visualisation
- Spatial Data Visualisation
- Digital Narrative
- Looking and Playing with TimeMapper
- Discussion

Open Knowledge Foundation

- › Open Knowledge is a worldwide non-profit network of people passionate about openness, using advocacy, technology and training to unlock information and enable people to work with it to create and share knowledge.
- › Open Knowledge Labs : Tools and Insights using OD
- › Open Source —> Open Data + Open Content + Open Code

A large, white, circular arrow diagram is centered on the slide. It consists of two thick white curved arrows forming a circle. The top arrow points from left to right, and the bottom arrow points from right to left, creating a continuous loop.

Collaboration + Engagement

Temporal Data Visualisation

- A Timeline typically displays a series of events in chronological order;
- A wealth of tools that allow for combinations of text, images, video and sound;
- Are not constrained to monosequential time;
- Moved beyond static to dynamic and interactive.

Anne Frank timeline

1945 - 1948 Otto returns

akes place from 17



☞ V.J. Day Times Square, New York.



☞ San Francisco Conference, signing ceremony of the United Nations Charter.



☞ The Dutch colony of Indonesia declares its independence, 17 August 1945.



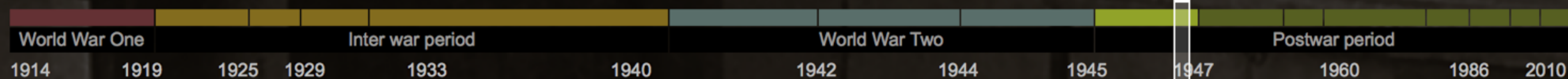
☞ Expelled Germans on the move.



1946

"I was overwhelmed by the painful memories of the revelation for me that my eyes appeared completely different than the daughter I had lost."

Otto Frank





1949 CE

1960 CE

1980 CE

2000 CE

Experiments

Discoveries

Computing

Machines

CERN



CERN

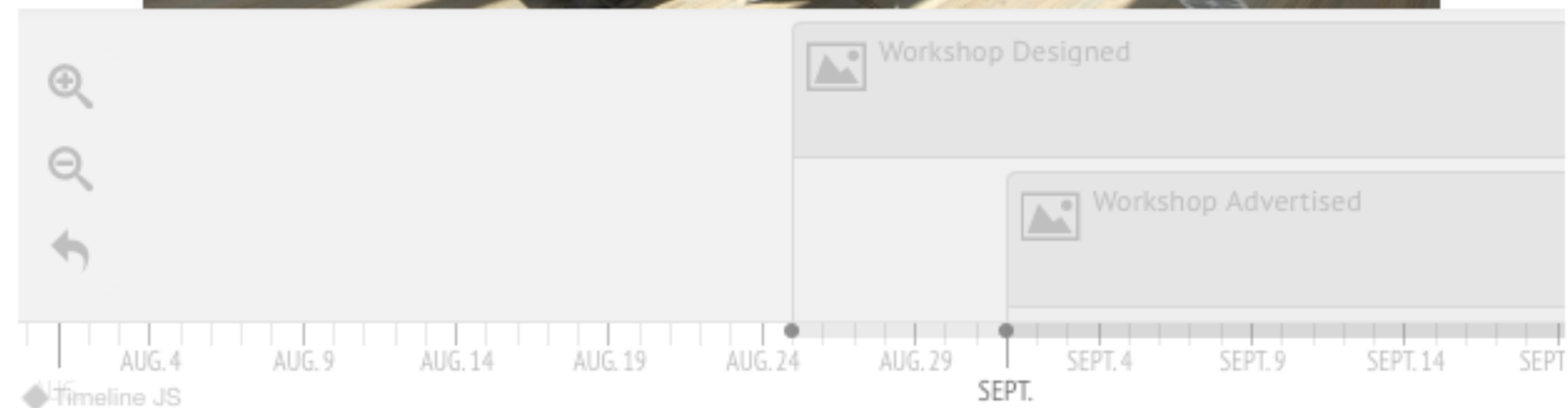
Ingredients for Timeline JS

- A Google Drive Account
- An Online Storage Space for Media
- Data
 - Start and End Dates
 - Headline
 - Content
 - Text
 - Media
- A Conceptual Map

A Workshop

WORKSHOP CONCEPTUALISED

Shawn came up with an intriguing Idea he wanted to share with the scholarly community at UCD



Tips & tricks

1. Keep it short, and write each event as a part of a larger narrative.
2. Pick stories that have a strong chronological narrative. It does not work well for stories that need to jump around in the timeline (that's what Storymap JS is for).
3. Include events that build up to major occurrences — not just the major events.

Spatial Data Visualisation

- Typically Places or Events arranged in referenced space;
 - i.e. points on a map
- Challenged by projection and perception

A Quick Example Spatial Visualisation



THE MCATEERS OF GUELPH: A FAMILY HOTEL ODYSSEY

Volatile business cycles, fickle markets and a rapidly changing economy challenged the ability of the Victorian hotelkeeper attempting to run a profitable business. To succeed, the keeper had to contend with far more. The late 19thC keeper sought a livelihood from a business that was the subject of this ongoing social contest - Victorian moral rectitude and the stringent demands of temperance movements cast the hotel as the site of illicit assignations, bar room brawls and drunken licentiousness, and as a result, it was subject to scrutiny by police and liquor license inspectors.

Hotelkeeping demanded specialized skills on the part of the proprietor to negotiate the turbulent waters of moral crusaders and the close attention of government license inspectors and still turn a profit. The social side of the hotel trade recognized that many keepers were mothers and fathers, members of a wider community, raising families and seeking to maintain respectability within the community.

Nonetheless, while under attack on multiple fronts, hotels continued to thrive and prosper, which allowed their keepers to accumulate significant wealth. Throughout the Victorian era, the community continued to patronize the hotel, even during local prohibition, and demanded new functions such as a place to conduct business, both private and public. Some hotelkeepers succumbed to business pressures, but many met the challenge and were rewarded for their success in adapting to change and managing risk. They developed specialized skills and capitalized on the opportunities that the trade offered.

John McAteer was one such individual. Born in Donegal, he was a



Introducing OKFN TimeMapper

<http://timemapper.okfnlabs.org>

Combining Space and Time



This work by Shawn Day is licensed under a
Creative Commons Attribution-
NonCommercial-ShareAlike 4.0 International
License

What is TimeMapper?

- TimeMapper is an open-source project of Open Knowledge Foundation Labs.
- It uses open-source components including TimelineJS, ReclineJS, Leaflet, Backbone and Bootstrap to allow for create of a deep temporal and spatial narrative to embed into your own site
- It leverages TimelineJS that we have already seen and presents the combination a little bit differently than StoryMapJS

What do you need to use TimeMapper

- A Google account;
- Shareable, rich media:
 - Flickr,
 - YouTube,
 - Vimeo,
 - Twitter
 - Wikipedia, etc.
- A concept/story map

What's Cool about TimeMapper

- It's OpenSource;
- Easy to use;
- Can Deploy on your own site;
- Easily deployed into a blog;
- Your own your own data;

- And - it combines Spatial and Temporal Storytelling

3 Steps

1. Create a Google Sheet

- Add your dates and places to a Google Spreadsheet.

2. Connect and Customize

- Connect your spreadsheet with TimeMapper and customize the results.

3. Publish, Embed and Share

How It Works

1. Create a Spreadsheet

Add your dates and places to a Google Spreadsheet.

2. Connect and Customize

Connect your spreadsheet with TimeMapper and customize the results.

3. Publish, Embed and Share

Publish your TimeMap at your own personal url, then share or embed on your site.

TimeMapper in Action

The Life and Times of Sir Robert Hart by qubdh using TimeMapper

Tweet Embed

Sir Robert Hart MS 15/6/1/B33 c. 1910

Special Collections

Sir Robert Hart

1835 - 1911

This is a substantial collection of personal and official papers, comprising a range of interesting and insightful material relating to Hart's official duties and experiences in Peking during his long career in charge of the Chinese Customs Service. Significant in this regard is the long series of 77 personal journals which Hart kept during this time. Running from 1854 when he first entered the Chinese administration, the diaries record many personal anecdotes and reminiscences about his life and work in China. The collection also contains a significant series of correspondence amounting to some 7000 letters dating from 1899 to 1911. Although the majority relate to personal matters, corresponding with family members, other relatives and friends, many have a bearing on customs affairs. Other items of interest include a set of

Birth

Life at Queen's

Sir Robert Hart 1835 - 1911

Early School Somerset

British Consul Ningpo

Introduction

Early School Dublin

Arctic Ocean

Barents Sea

Siberia

ASIA

Gobi

Sahara

Arabian Peninsula

AFRICA

Congo Basin

Indian Ocean

Indonesia

Australia

South Atlantic Ocean

Powered by Leaflet — Map data © 2011 OpenStreetMap contributors, Tiles Courtesy of MapQuest

Step 1 Assemble Data

- What data do you need?
- What types of data can you add?
- What tools can you use to collect?

1. Create a Spreadsheet

(if you don't have one already!)

Get started by copying . For more details or help with problems check out the [FAQ below](#).

Impatient to try this out but don't have a spreadsheet yet?
[Click here to use a pre-prepared example >>](#)

Title	Start	End	Description	Web Page	Media	Media Caption	Media Credit	Tags	Place	Location
Sir Robert Hart 1835 - 1911	1835	1911	This is a substantial introduction to the life of Sir Robert Hart, an Irish-born diplomat and naval officer who served as the first Commissioner of the Customs and Maritime Customs of China from 1863 to 1906.	http://omeka.qub.ac.uk/files/original/3826	http://omeka.qub.ac.uk/files/original/2435	Sir Robert Hart MS 15/6/1/B13a c. 1912 Photograph of Sir Robert Hart, Shanghai	Special Collections		Belfast, UK	54.5953949,-5.9285062
Introduction	1835	1911	Sir Robert Hart, an Irish-born diplomat and naval officer who served as the first Commissioner of the Customs and Maritime Customs of China from 1863 to 1906.	http://omeka.qub.ac.uk/files/original/3826	http://omeka.qub.ac.uk/files/original/2435	Sir Robert Hart MS 15/6/1/B13a c. 1912 Photograph of Sir Robert Hart, Shanghai	Special Collections		Northern Ireland	54.6641641,-7.9259605
Birth	20/02/1835		Sir Robert Hart was born in Belfast, Northern Ireland, on 20 February 1835.	http://omeka.qub.ac.uk/files/original/2435	http://omeka.qub.ac.uk/files/original/2435	Sir Robert Hart MS 15/6/1/B13a c. 1912 Photograph of Sir Robert Hart, Shanghai	Special Collections		42 Woodhouse Street, Belfast, UK	54.4231042,-6.4457506
Early School Somerset	1845	1846	Robert Hart was 10 years old when he moved to Somerset, England, in 1845.	http://omeka.qub.ac.uk/files/original/2435	http://omeka.qub.ac.uk/files/original/2435	Sir Robert Hart MS 15/6/1/B13a c. 1912 Photograph of Sir Robert Hart, Shanghai	Special Collections		Wesleyan School, Taunton, UK	51.0214849,-3.1350443
Early School Dublin	1846	1850	His father was furious when he discovered that Hart was 15 years old in 1854 the British Flag sailed from Southampton. In 1854 very little was known of Hart. Hart spent his first 3 years in Dublin.	http://omeka.qub.ac.uk/exhibits/show/hart3511/earlylife		Robert Hart c.1854	Special Collections		Queen's University Belfast, UK	54.5844118,-5.9362434
Life at Queen's	1850	1853		http://omeka.qub.ac.uk/exhibits/show/hart3511/earlylife		Robert Hart c.1854	Special Collections			
British Consulate, Ningpo	1854	01/03/1858	From Ningpo he moved to Shanghai in May 1859. Robert Hart was 24 years old when he returned to China.	http://omeka.qub.ac.uk/exhibits/show/hart3511/earlylife		Yochow Custom House	Special Collections		British Consulate, Ningpo, China	29.8700037,121.4315302
British Consulate, Canton	01/03/1858	01/05/1859		http://omeka.qub.ac.uk/exhibits/show/hart3511/earlylife		Stuhlmann and Lisa	Special Collections		British Consulate, Canton, China	23.125866,112.6659747
Joining the CIMC	01/05/1859	1863		http://omeka.qub.ac.uk/exhibits/show/hart3511/earlylife		Customs House (MS)	Special Collections		CIMC, Canton, China	23.125866,112.6659747
Commissioner at Shanghai	1863	1866		http://omeka.qub.ac.uk/exhibits/show/hart3511/earlylife		Commissioner's House	Special Collections		Shanghai, China	31.2243025,120.9148976
Marriage	1866		In 1866, after twelve years in China, Hart returned to Ireland.	http://omeka.qub.ac.uk/exhibits/show/hart3511/earlylife		Hart Family c. 1888	Special Collections		Portadown, UK	54.4231042,-6.4457506
Honeymoon In Killarney	1866		After a brief honeymoon in Killarney, Ireland, Hart returned to China.	http://omeka.qub.ac.uk/exhibits/show/hart3511/earlylife		Hart Family, ca. 187	Special Collections		Killarney, Ireland	52.0605651,-9.5251525
Family Life	1876	1878	Hessie remained in Ireland until 1878.	http://omeka.qub.ac.uk/exhibits/show/hart3511/earlylife		Easter Sunday 1906	Special Collections		Peking, China	39.9390715,116.1165808
The Family in China	1879	1882	The family returned to China in 1879.	http://omeka.qub.ac.uk/exhibits/show/hart3511/earlylife		Hankow, 5 November	Special Collections		Paris, France	48.8589506,2.2773452
The Hart Family Return	1882	1906	However, in 1882 Hart returned to China.	http://omeka.qub.ac.uk/exhibits/show/hart3511/earlylife		Tiffin at the Statistic	Special Collections		Peking, China	39.9390715,116.1165808
Lifestyle	1906		Hart was a busy man in 1906.	http://omeka.qub.ac.uk/exhibits/show/hart3511/earlylife		'Chinese Customs'.	Special Collections		Peking, China	39.9390715,116.1165808
Rebellion in Peking	01/06/1900	14/08/1900	The diplomatic legations in Peking were besieged by the Boxers in 1900.	http://omeka.qub.ac.uk/exhibits/show/hart3511/earlylife		Sir Robert Hart's Br	Special Collections		Peking, China	39.9390715,116.1165808
Hart Declared Dead	17/07/1900	14/08/1900	Sir Robert Hart's home in Portadown, UK, was destroyed by fire in 1900.	http://omeka.qub.ac.uk/exhibits/show/hart3511/earlylife		Sir Robert Hart's ho	Special Collections		Peking, China	39.9390715,116.1165808
Leaving Service	13/04/1908		Campbell, Hart's close friend, died in 1908.	http://omeka.qub.ac.uk/exhibits/show/hart3511/earlylife		Sir Robert Hart, Sha	Special Collections		Great Marlow, UK	51.5861649,-0.8750601
Pro-Chancellor of Queen's	1908	1911	Sir Robert Hart was appointed Pro-Chancellor of Queen's University Belfast in 1908.	http://omeka.qub.ac.uk/exhibits/show/hart3511/earlylife		MS 15/6/1/B13a c. 1	Special Collections		Queen's University Belfast, UK	54.5844118,-5.9362434
Death	20/09/1911		He died on 20th September 1911. Hart kept a diary throughout his life.	http://omeka.qub.ac.uk/exhibits/show/hart3511/earlylife		1912 Photograph of	Special Collections		Bisham on the Thames, UK	51.5422538,-0.8071865



Step 2 Create Google Sheet

1. Create a Spreadsheet

(if you don't have one already!)

Get started by copying . For more details or help with problems check out the [FAQ](#) below.

Impatient to try this out but don't have a spreadsheet yet?
[Click here to use a pre-prepared example >>](#)

TimeMapper Elegant timelines and maps created in seconds

It's free and easy to use – Get started now >>

Title	Start	End	Description	Web Page	Media	Media Caption	Media Credit	Tags	Place	Location
Sir Robert Hart 1835 - 1	1835	1911	This is a substantial	http://omeka.qub.ac	http://omeka.qub.ac	Sir Robert Hart MS	Special Collections		Belfast, UK	54.5953949,-5.9285062
Introduction	1835	1911	Sir Robert Hart, an I	http://omeka.qub.ac	http://omeka.qub.ac.uk/files/original/3826	Special Collections			Northern Ireland	54.6641641,-7.9259605
Birth	20/02/1835		Sir Robert Hart was	http://omeka.qub.ac	http://omeka.qub.ac.uk/files/original/2435	Special Collections			42 Woodhouse Stre	54.4231042,-6.4457506
Early School Somerset	1845	1846	Robert Hart was 10	http://omeka.qub.ac	http://omeka.qub.ac.uk/files/original/2435	Special Collections			Wesleyan School, T	51.0214849,-3.1350443
Early School Dublin	1846	1850	His father was furio	http://omeka.qub.ac.uk/exhibits/show/hart3511/earlylife		Special Collections			Wesley Connexiona	53.2784846,-6.2441503
Life at Queen's	1850	1853	Hart was 15 years o In 1854 the British F Hart sailed from Sou In 1854 very little wa Hart spent his first 3	http://omeka.qub.ac	http://omeka.qub.ac	Robert Hart c.1854	Special Collections		Queen's University E	54.5844118,-5.9362434
British Consulate, Ning	1854	01/03/1858		http://omeka.qub.ac	http://omeka.qub.ac	Yochow Custom Hou	Special Collections		British Consulate, N	29.8700037,121.4315302
British Consulate, Cant	01/03/1858	01/05/1859	From Ningpo he mo	http://omeka.qub.ac	http://omeka.qub.ac	Stuhlmann and Lisa	Special Collections		British Consulate, C	23.125866,112.6659747
Joining the CIIMC	01/05/1859	1863	In May 1859 Robert	http://omeka.qub.ac	http://omeka.qub.ac	Customs House (MS	Special Collections		CIMC, Canton, Chin	23.125866,112.6659747
Commissioner at Shang	1863	1866	When Lay returned i	http://omeka.qub.ac	http://omeka.qub.ac	Commissioner's Hou	Special Collections		Shanghai, China	31.2243025,120.9148976
Marriage	1866		In 1866, after twelve	http://omeka.qub.ac	http://omeka.qub.ac	Hart Family c. 1888	Special Collections		Portadown, UK	54.4231042,-6.4457506
Honeymoon In Killarney	1866		After a brief honeym	http://omeka.qub.ac	http://omeka.qub.ac	Hart Family, ca. 187	Special Collections		Killarney, Ireland	52.0605651,-9.5251525
Family Life	1876	1878	Hessie remained in	http://omeka.qub.ac	http://omeka.qub.ac	Easter Sunday 1906	Special Collections		Peking, China	39.9390715,116.1165808
The Family in China	1879	1882	The family returned	http://omeka.qub.ac	http://omeka.qub.ac	Hankow, 5 Novembe	Special Collections		Paris, France	48.8589506,2.2773452
The Hart Family Return	1882	1906	However, in 1882 He	http://omeka.qub.ac	http://omeka.qub.ac	Tiffin at the Statist	Special Collections		Peking, China	39.9390715,116.1165808
Lifestyle	1906		Hart was a busy ma	http://omeka.qub.ac	http://omeka.qub.ac	'Chinese Customs'	Special Collections		Peking, China	39.9390715,116.1165808
Rebellion in Peking	01/06/1900	14/08/1900	The diplomatic legat	http://omeka.qub.ac	http://omeka.qub.ac	Sir Robert Hart's Br	Special Collections		Peking, China	39.9390715,116.1165808
Hart Declared Dead	17/07/1900	14/08/1900	Sir Robert Hart's ho	http://omeka.qub.ac	http://omeka.qub.ac	Sir Robert Hart's ho	Special Collections		Peking, China	39.9390715,116.1165808
Leaving Service	13/04/1908		Campbell, Hart's clo	http://omeka.qub.ac	http://omeka.qub.ac	Sir Robert Hart, Sha	Special Collections		Great Marlow, UK	51.5861649,-0.8750601
Pro-Chancellor of Quee	1908	1911	Sir Robert Hart was	http://omeka.qub.ac	http://omeka.qub.ac	MS 15/6/1/B13a c. 1	Special Collections		Queen's University E	54.5844118,-5.9362434
Death	20/09/1911		He died on 20th Sep Hart kept a diary thr	http://omeka.qub.ac	http://omeka.qub.ac	1912 Photograph of	Special Collections		Bisham on the Than	51.5422538,-0.8071865



Step 3 Share and Publish the Google Sheet

UCD Philosophers

File

Edit

View

Insert

Format

Data

Tools

Add-ons

Help

All

Share...

New

Open...

Rename...

Make a copy...

Move to...

Move to bin

Import...

See revision history

Spreadsheet settings...

Download as

Publish to the web...

Email collaborators...

Email as attachment...

Document details...

Print

William of Ockham (/'ɒkə spellings; c. 1288 – c. 134 scholastic philosopher, wh small village in Surrey. He medieval thought and was political controversies of th known for Occam's razor, name, William of Ockham physics, and theology. In t commemoration is 10 Apr Francis of Mayrone (Franc French scholastic philosop Scotus, whose teaching (S great reputation for ability as the Doctor Illuminatus ' Doctor acutus, and as Mac

Did some Stuff...

Publish to the web

This document is published to the web.

Make your content visible to anyone by publishing it to the web. You can link to or embed your document. [Learn more](#)

Link

Embed

Entire Document

Web page

https://docs.google.com/spreadsheets/d/1pH0dFSTmpQuKjvnVG1wdMra_0e3oJrUu

Or share this link using:

G+

M

f

Note: Viewers may be able to access the underlying data for published charts. [Learn more](#)

Published

Published content and settings

Entire Document

Stop publishing

☒ Automatically republish when changes are made



Step 4 Connect to the Data


2. Connect and Customize

ALERT: you are **not signed in** so your timemap will be created '**anonymously**'.

If want to 'own' your timemap you should [sign in \(or sign-up\) now >>](#)
(Sign-up takes a few seconds with your [twitter account >>](#))

Find out more on anonymous vs logged in – [read FAQ below >>](#)

Data Source

 [Select from Your Google Drive](#)

(If nothing happens check you are not blocking popups ...)

<https://docs.google.com/spreadsheets/d/1dUtep4KedfcfZMNNv4xXW81gkIaSiOy-iwV>

Important: you must "publish" your Google Spreadsheet: go to File Menu in your spreadsheet, then 'Publish to the Web', then click 'Start Publishing'. See [the FAQ below](#) for more details

TimeMapper

Elegant timelines and maps created in seconds

It's free and easy to use – [Get started now >>](#)

Step 5 Configure

Title

Type of Data View

- ☒ Timemap
- ☐ Timeline
- ☐ Map

Choose the visualization type of your data – TimeMap (Timeline and Map combined), Timeline or Map.

More Options

Ambiguous Date
Handling

- ☒ **mm/dd/yyyy** – month first (US style)
- ☐ **dd/mm/yyyy** – day first (non-US style)

How to handle ambiguous dates like "05/08/2012" in source data (could be read as 5th August or 8th of May).

If you do not have any dates formatted like this then you can ignore this!

Start from

- ☒ First event
- ☐ Last event
- ☐ Today

Where on the timeline should the user start.



Step 6 Publish the TimeMap

Embed Instructions

Copy and paste the following into your web page

```
<iframe src="http://timemapper.okfnlabs.org/qubdh/copy-of-timemapper-template?embed=1" frameborder="0" style="border: none;" width="100%" height="780;">
</iframe>
```

Life and Times of Sir Robert Hart

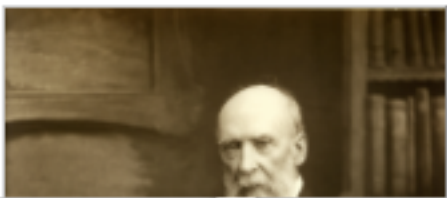
Rendered in TimeMapper from Open Knowledge Foundation Labs

1835 — 1911

Sir Robert Hart 1835 - 1911

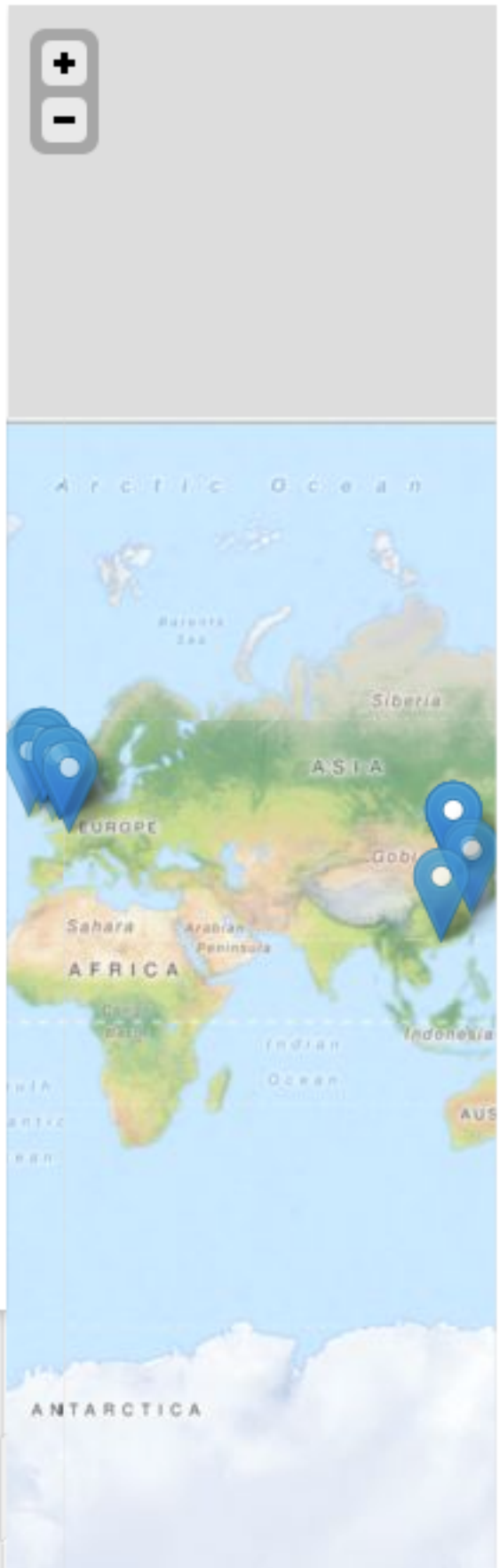
This is a substantial collection of personal and official papers, comprising a range of interesting and insightful material relating to Hart's official duties and experiences in Peking during his long career in charge of the Chinese Customs Service. Significant in this regard is the long series of 77 personal journals which Hart kept during this time. Running from 1854 when he first entered the Chinese administration, the diaries record many personal anecdotes and reminiscences about his life and work in China. The collection also contains a significant series of correspondence amounting to some 7000 letters dating from 1899 to 1911. Although the majority relate to personal matters, corresponding with family members, other relatives and friends, many have a bearing on customs affairs. Other items of interest include a set of notes and papers detailing Hart's experiences and analysis of the Boxer disturbances in Peking, 1900; numerous photographs and glass-slides. This collection provides an important insight into the life and career of Sir Robert Hart.

Source: [Special Collections, Queen's University Belfast](#)



Birth

Sir Robert Hart 1835 - 1911





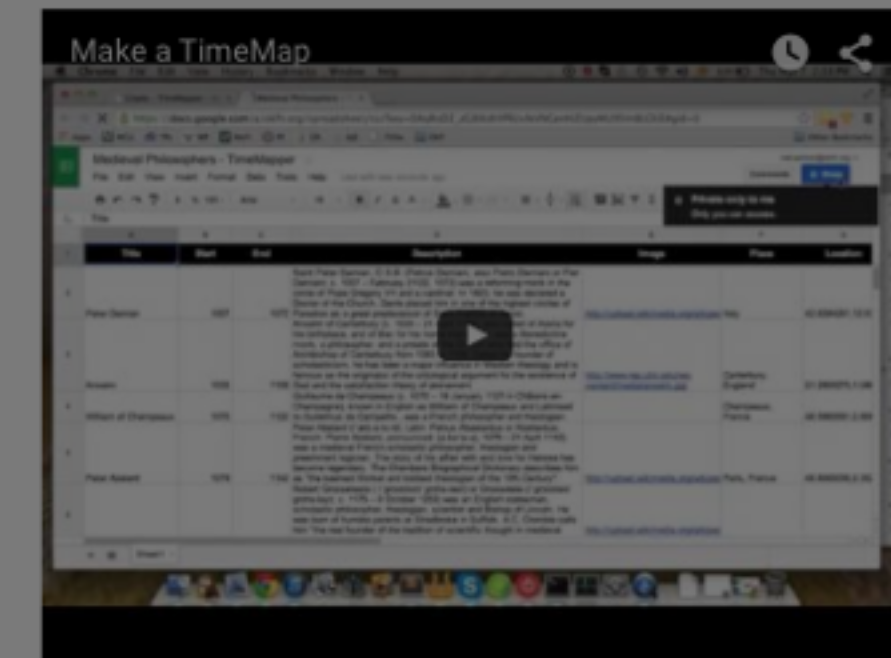
Let's Make a TimeMap

<http://timemapper.okfnlabs.org>

TimeMapper Elegant timelines and maps created in seconds

It's free and easy to use – Get started now >>

Watch the 1 minute Tutorial

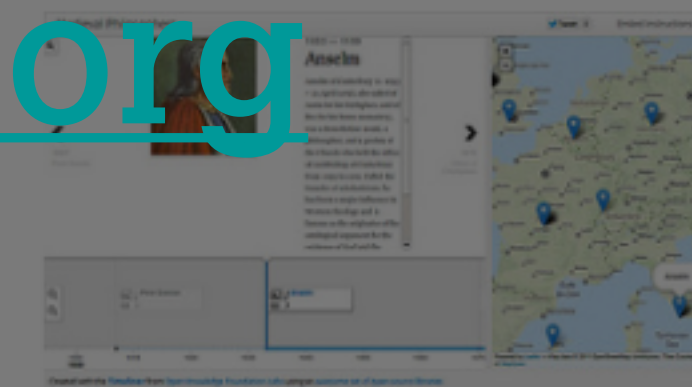


Examples

Battles in the Napoleonic Wars



Medieval Philosophers



Archaeology of Wine



How It Works

1. Create a Spreadsheet

Add your dates and places to a Google Spreadsheet.

2. Connect and Customize

Connect your spreadsheet with TimeMapper and customize the results.

3. Publish, Embed and Share

Publish your TimeMap at your own personal url, then share or embed on your site.

Credits

TimeMapper is an open-source project of [Open Knowledge Foundation Labs](#). It is possible thanks to a set of awesome open-source components including [TimelineJS](#), [ReclineJS](#), [Leaflet](#), [Backbone](#) and [Bootstrap](#). You can find the [full open-source source for TimeMapper on GitHub](#) here.

Add Data to the Google Spreadsheet

- I have created a TimeMapper Template for us:
- <https://goo.gl/SmBXm9>
- We will all complete a row in the spreadsheet
- Then we can publish it and see the results
- Add yourself to the map ... add your birthday, a short biography (description) and an image to the spreadsheet and your place of birth lie if you want to ;-)

Spreadsheet Contents

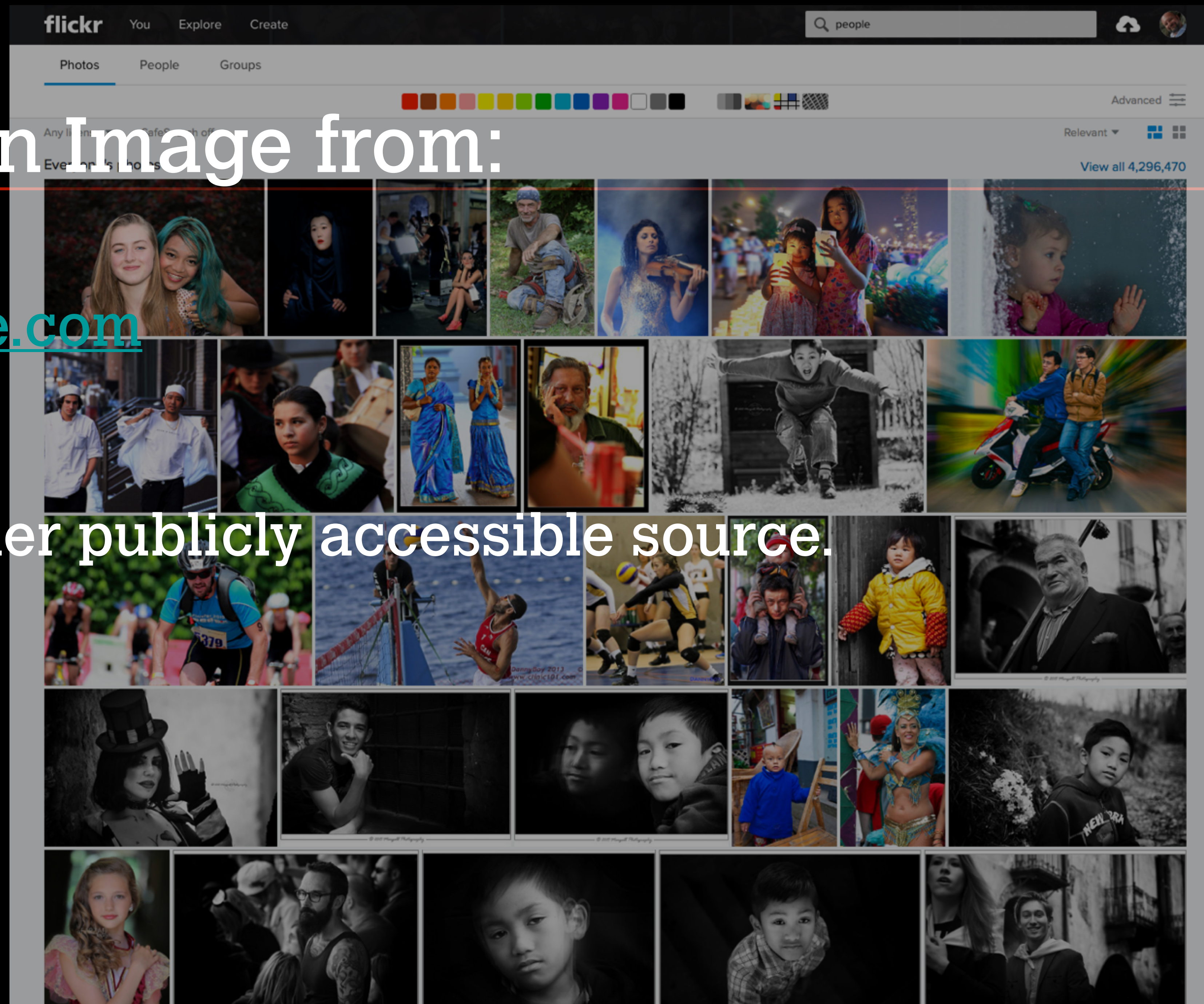
Title		Start	End	Description	Web Page	Media	Media Caption
A title for the First 'Slide'		DD-MM-YYYY	DD-MM-YYYY	You can include the larger textual narrative for the screen/event here.	A webpage reference if a viewer wants additional information	a URL to a media item (image, video, audio, etc.)	A short caption for the digital object
Tags		Place	Location		Source	Source URL	
Your own folksonomic use		Name of Place	lat, long , ie. 54.5953949,-5.9285062		Publisher	URL to source of the information you are sharing	

Let's each create that birthday event

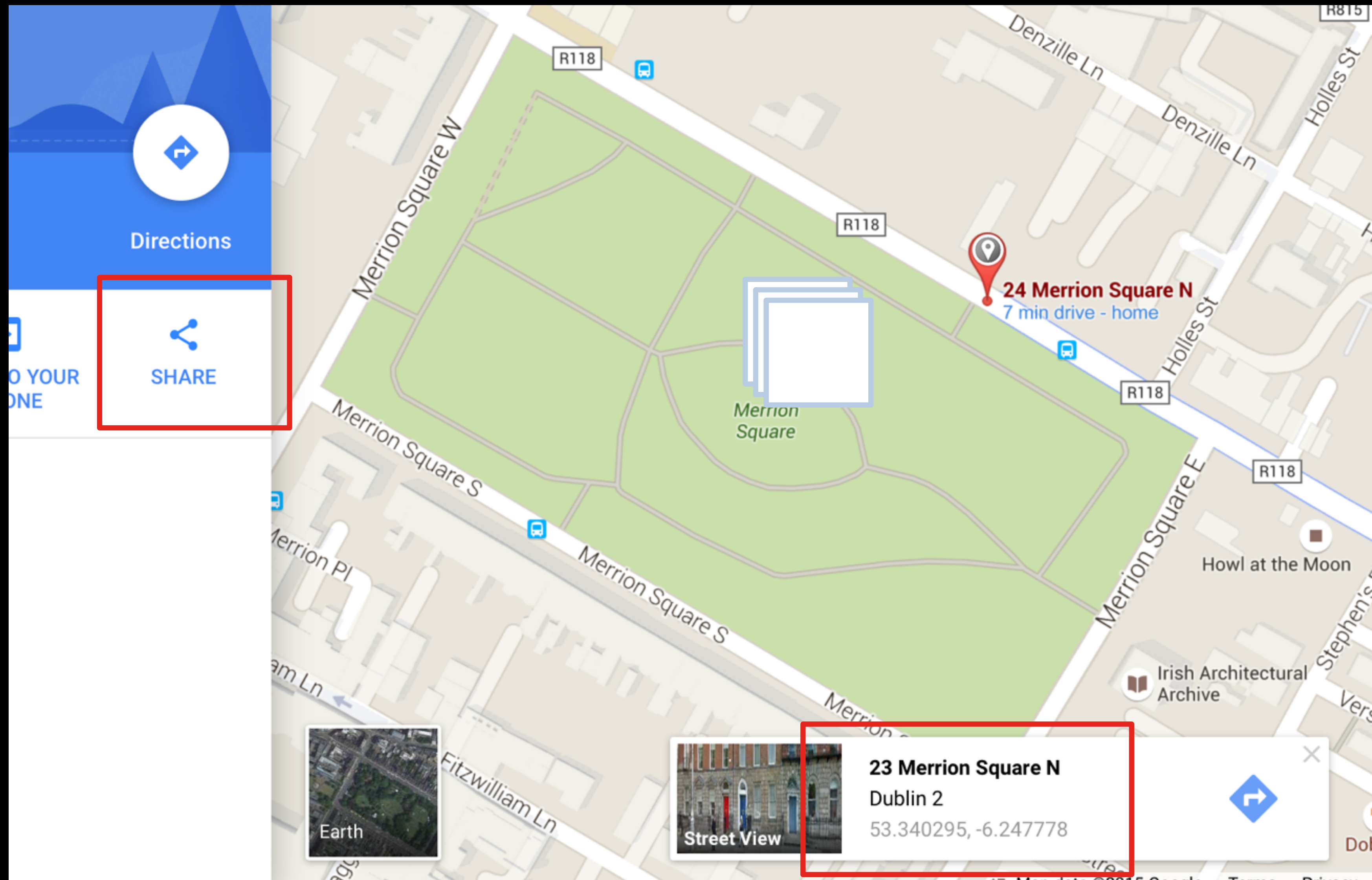


Choose an Image from:

- ▶ [flickr.com](https://www.flickr.com)
- ▶ plus.google.com
- ▶ [bing.com](https://www.bing.com)
- ▶ ora any other publicly accessible source.



Getting a Long and Lat using Google Map



Summarising

- Neatline
 - Exhibit
 - Flexibility
 - Level of Development
 - Cost
 - Data Sharing
- [Timeline JS](#)
 - [Juxtapose JS](#)
 - [Storymap JS](#)
 - [ESRI Story Map](#)



Thanks

@iridium day.shawn@gmail.com



This work by Shawn Day is licensed under a
Creative Commons Attribution-
NonCommercial-ShareAlike 4.0 International
License